



2022

CATALOGUE NO. 06

About Us

About V-Mach International

Established in year **2003**, **V-Mach International** an ISO 9001:2015 certified company is the leading **Wholesaler & Trader of Engineering and Industrial Tools and more**. The range of products offered by us is of premium quality that boasts of client's confidence. We consider passing each and every finished product through stringent product inspection processes, in order to ensure that deliveries made at our client's end, are absolutely flawless.

Our products have been widely accepted by all leading Industries ranging from private and public sector undertakings, defence organizations, etc. and have found satisfied customers around the world.

Vision :-

Promoter and Distributor of Quality Brands which provides Value of Money Products with Technical support like Service, Repair, Calibration, Demonstration, Installation at one stop.

Customer Satisfaction :-

Our company is committed to achieve complete customer satisfaction through our after sales services. To cut down on the client's expenditures in buying new parts for our equipment, we provide them with maintenance services and genuine spares and parts. Leveraging on our amicable relations with our dealers, we have the ability to get the products customized as per the specific requirements of the clients. This is done on the basis of product details, samples and price structures provided by the customer. Our dexterous personnel work in close coordination with the clients to get a better understanding of their requirements and get them the required products.

Our products are supplied to:

Wholesalers
Vendors
Retailers
Corporate buyers
Distributors

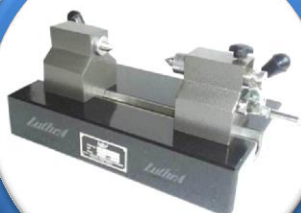
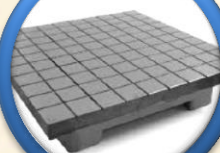
Why Us?

We have been immersed in the realm of presenting to our clients an extensive variety of products. Following are the reasons for our success:

- Prompt delivery of order
- Ethical business deals
- Transparency
- Flexible payment modes
- Huge distribution network.

We cater to our customers from various sectors and ensure our products are price competitive. ... We are committed towards enhancing customer satisfaction through manufacturing and supplying best quality product, training and motivating employees.

Inspection Equipment



LuthrA

The logo features the word "LuthrA" in a stylized red font above a red graphic element consisting of a series of vertical bars and circles, resembling a stylized ship or a set of measurement points.



Cast Iron Surface Plates

Size : 250 x 250 to 5000 x 1000
Grade : 0, I, & II
Special sizes on request

ART-101



Granite Surface Plates

Size : 300 x 300 to 3000 x 3000
Grade : 00,0, I, II & III
Special sizes on request

ART-102



Cast Iron Bench Center

Size : 150 x 75 to 2000 x 250
Grade : 0 & I
Special sizes on request

ART-103



Granite Bench Center

Size : 150 x 75 to 750 x 200
Grade : 0 & I
Special sizes on request

ART-104



Vertical Bench Center

Size : 500 x 160
Grade : I
Special sizes on request

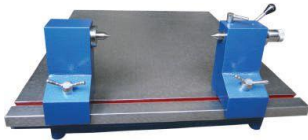
ART-105



Vertical Bench Center

With ball Screw & Ball Nut
Size : 300 x 160, 500 x 160
Grade : I, Type: Cast Iron , Granite
Special sizes on request

ART-106



Cast Iron Bench Center

With Surface Plate
Size : 750 x 600 to 2000 x 1000
Grade : 0 & I
Special sizes on request

ART-107



Granite Bench Center

With Surface Plate
Size : 750 x 600 to 2000 x 1000
Grade : 0 & I
Special sizes on request

ART-108



Universal Bench Center

Vertical Cum Horizontal
Size : 225 x 80 & 300 x 160
Grade : I
Special sizes on request

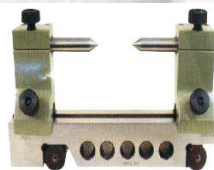
ART-109



Universal Bench Center

Vertical Cum Horizontal
(With Lead Screw & Hand Wheel)
Size : 300 x 80 & 500 x 80
Grade : I
Special sizes on request

ART-110



Sine Center

Size : 200 x 65 & 300 x 65
Grade : I
Special sizes on request

ART-111



Sine Bar

Size : 100, 200 & 300
Special sizes on request

ART-112



Slotted Angle Plates

Size : 6" x 4" x 5" & 40" x 20" x 28"
Grade : I
Special sizes on request

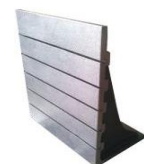
ART-113



Plain Angle Plates

Size : 4" x4" x4" & 18" x18" x18"
Grade : I
Special sizes on request

ART-114



T-Slotted Angle Plates

Size : 10" x6" x7" & 28" x28" x64"
Grade : I
Special sizes on request

ART-115



Box Angle Plates

Size : 7" x 4" x 5" to 30"x16"x 24"
Grade : I
Special sizes on request

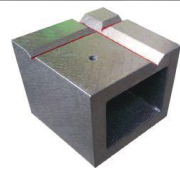
ART-116



Cast Iron Cubes

Size : 4" x4" x4" to 20" x20" x20"
Grade : I
Special sizes on request

ART-117



Cast Iron Cubes

With 90° Vee-Groove
Size : 6" x 6" x 6" to 12" x 12" x 12"
Grade : I
Special sizes on request

ART-118



Granite Cubes

With 90° Vee-Groove
Size : 6" x 6" x 6" to 12" x 12" x 12"
Grade : 0
Special sizes on request

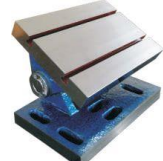
ART-119



Tilting Table (0°-45°)

Size : 125mm to 375mm
Grade : I
Special sizes on request

ART-120



Swivel Angle Table (0°-90°)

Size : 150mm to 375mm
Grade : I
Special sizes on request

ART-121



Radial Drill Box Tables

Size : 450, 630 & 1000 mm
Special sizes on request

ART-122



Granite Comparator Stand

Size : 100 x 150 to 400 x 400 mm
Dial Indicator is optional
Special sizes on request

ART-123



Granite Comparator Stand

Size : 70 x 70 to 300 x 300 mm
Dial Indicator is optional
Special sizes on request

ART-124



Granite Lapping Plates

Size : 150 x 100 & 630 x 630
Grade : 0
Special sizes on request

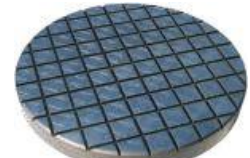
ART-125



Cast Iron Lapping Plates

Size : 200 x 200 & 1000 x 1000
Grade : I
Special sizes on request

ART-126



Cast Iron Lapping Plates

Size : Dia. 100 & Dia. 900
Grade : I
Special sizes on request

ART-127



Engineer's (Steel) Straight Edge (Flat Section)

Size : 300 x40 to 6000 x 120 mm
Grade : I
Special sizes on request

ART-128



Aluminum Straight Edge Light Weight (Flat Section)

Size : 600 x 40 to 5000 x 90 mm
Grade : I
Special sizes on request

ART-129



Cast Iron Straight Edge (I- Section) Parallel Type

Size : 500 x100 to 8000 x 400 mm
Grade : I
Special sizes on request

ART-130



**Aluminum Straight Edge
Light Weight (Parallel Type)**

Size : 1000 x110 to 5000 x 150 mm
Grade : I
Special sizes on request

ART-131



**Cast Iron Straight Edge
Prismatic (Triangular)**

Size : 500 x 70 x 2000 x 130 mm
Grade : I
Special sizes on request

ART-132



**Knife Straight Edge
(Tool Maker's)**

Size : 100 to 1000mm
Grade : I
Special sizes on request

ART-133



**Cast Iron Straight Edge
Camel Back (Bow Shape)**

Size : 300 to 3000 mm
Grade : I
Special sizes on request

ART-134



**Cast Iron Straight Edge
90° Vee-Type**

Size : 1000 to 5000 mm
Grade : I
Special sizes on request

ART-135



Granite Straight Edge

Size : 1000 , 1500 & 2000 mm
Grade : I
Special sizes on request

ART-136



Test Mandrels

Taper Size : MT2 to MT4
Length : 300 to 500mm
Special sizes on request

ART-137



**Test Mandrels
(Parallel & Straight)**

Dia : 40 to 50
Length 300 to 500 mm
Dial Indicator is optional
Special sizes on request

ART-138



Master Cylinder

Size : 150 x 70 to 1000 x 160 mm
Grade - I
Special sizes on request

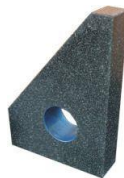
ART-139



Cast Iron Right Angle

Size : 200 to 150mm
Grade : I
Special sizes on request

ART-140



Granite Square (Triangular)

Size : 300 x 200 to 1000 x 630 mm
Grade : 0
Special sizes on request

ART-141



Granite Master Square

Size : 300 x 300 to 1000 x 1000 mm
Grade : 0
Special sizes on request

ART-142



Cast Iron Master Square

Size : 300 x 300 to 630 x 630 mm
Grade : I
Special sizes on request

ART-143



Gear Roll Tester

(Minimum Gear Dia – 200mm)
Size : 450 x 140mm
Grade : I

ART-144



**Surface Roughness Tester
Stand (Granite Base)**

Size : 400 x 250 mm
Grade : 0

ART-145



Cast Iron Clamping Plates

Size : 400 x400 to 750 x 750 mm

Grade : I

Special sizes on request

ART-146



ID- OD Tester

OD x ID : 140 x150 to 275 x290 mm

Grade : I

Special sizes on request

ART-147



Flatness Tester (Digital)

Size : 400 to 630mm

Grade : 0,1 Type – Granite, Cast Iron

Special sizes on request

ART-148



Steel Parallels

Size :100 x 10 to 400 x 100 mm

Grade : I

Special sizes on request

ART-149



Granite Parallels

Size : 150 x 50 to 300 x 60 mm

Grade : I

Special sizes on request

ART-150



Magnetic V Block

Size : 50 to 200mm

Grade : I

Special sizes on request

ART-151



Motorized Straightness And Manual Perpendicularity Checking Attachment

Sizes on request

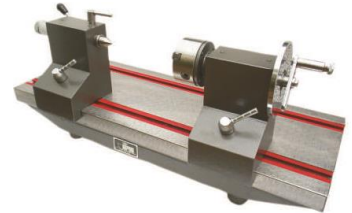
ART-152



Motorized Straightness And Manual Runout Checking Attachment

Sizes on request

ART-153



Bench Center With Chuck

Sizes on request

ART-154



Manual Straightness And Runout Checking Attachment

sizes on request

ART-155



Granite Surface Plates with T-slots

sizes on request

ART-156

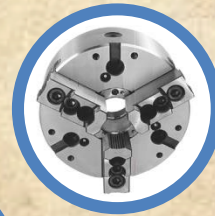


Cast Iron Bed Plates

sizes on request

ART-157

Industrial Chucks





**Power Chuck
Large Thru Hole**

ART-158



**Standard Self
Centering Chucks**

ART-159



Master Grip Chucks

ART-160



**Bearing Races
Chucks**

ART-161



**Crankshaft Grinder
Chucks**

ART-162



**Big Bore Self
Centering Chucks**

ART-163



**Drill Point Grinder
Chucks**

ART-164



**Lever Operated
Chucks**

ART-165



**Accuracy Adjustment
Chucks**

ART-166



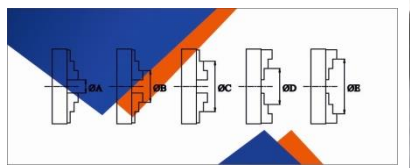
**Back Plates /
Mounting Flanges**

ART-167



**Heavy Duty 4-Jaw
Independent Chucks**

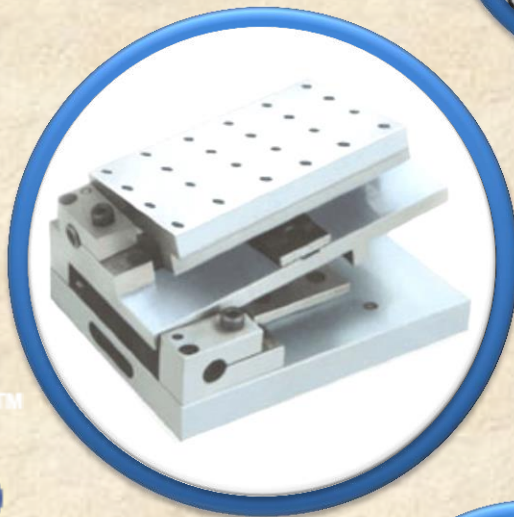
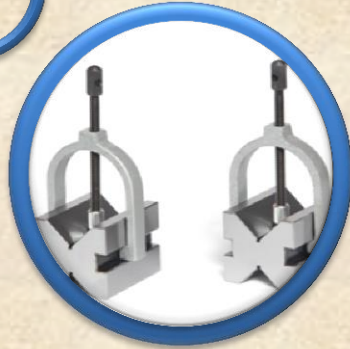
ART-168



**Gripping Capacity /
RPM of Chucks**

ART-169

Magnetic Products



TM





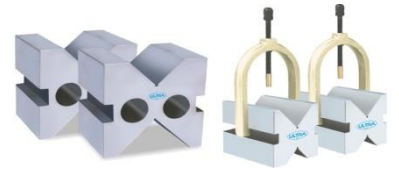
Magnetic V Blocks
Size : 2" to 8"

ART-170



Magnetic Rectangular Blocks
Size : 2" to 8"

ART-171



Ground V Block With Clamp
Size : 100 to 1000mm

ART-172



Roller Bearing Blocks
Size :150 to 230 mm

ART-173



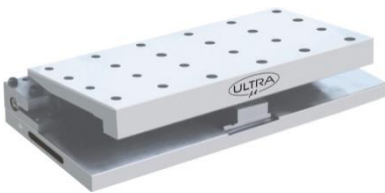
Magnetic Clamping Block
Size : 170L X 85W X 130H mm

ART-174



Heavy Duty Magnetic Holder
Size : 230L X 115W X 160H
Size : 175L X 85W X 130H

ART-175



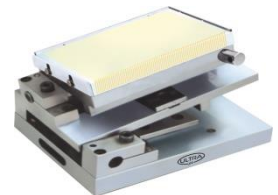
Sine Table
Size : 150 to 450 mm

ART-176



Magnetic Sine Table
Size : 150 to 450 mm

ART-177



Magnetic Compound Sine Table
Size : 150 to 450 mm

ART-178



Magnetic Base
Size : 60 to 290mm

ART-179



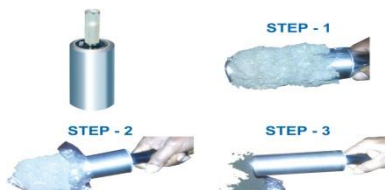
Magnetic Separator With On/Off Type
Size : 1" x 6"

ART-180



Plate Type Magnetic Separator
Size : 125 L X 175W X 30 mm

ART-181



Magnetic Separator For Coolant Tank
Size : 300 x 300 to 630 x 630 mm

ART-182



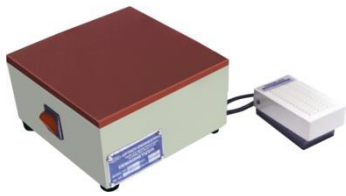
Permanent Magnetic Sweeper
Size : 300 to 600 mm

ART-183



Magnetic Telescopic Pens
Size :400 x 250 mm

ART-184



Demagnetizers

Size : 150 to 350mm

ART-185



Coil Type Demagnetizes With Handel (Not A Continuous)

Size : 100mm to 200mm

ART-186



Permanent Magnetic Chuck (Heavy Duty)

Pole Gap :9,11,14 & 19mm
Size : 300 to 600mm

ART-187



Electromagnetic Chuck (Heavy Duty)

Pole Gap :15 & 5(4+1)mm
Size : 450 to 1200mm

ART-188



Round Magnetic Chuck

Size : 150 to 450mm
Pole Gap :14,16 & 19mm

ART-189



Permanent Magnetic Lifter

Size :90 to 460mm
Tested Capacity : 1:3.5 Times

ART-190



Magnetic Holder

Size : 110 X 110 X 140 mm
Type : Soft & Hard

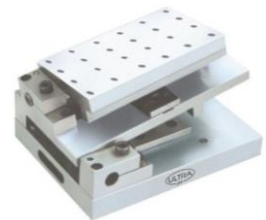
ART-191



Universal Surface Gauge

Size : 80 to 110mm

ART-192

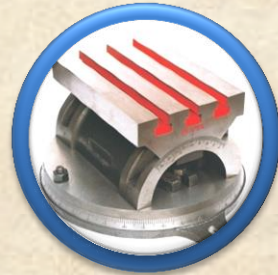
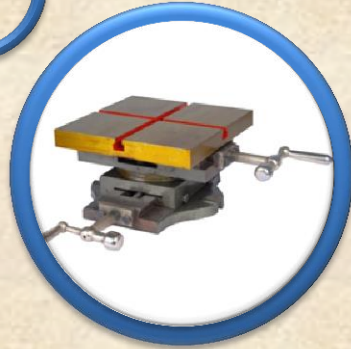


Sine Table

Size : 150 to 450 mm

ART-193

Machine Vices



UNIQUE





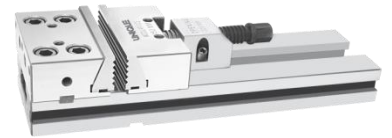
Hydraulic Pressure Vice
Size : 4" & 6"

ART-194



Precision Tilt Lock Hydraulic Vice
Size : 6"

ART-195



Modular Precision Machine Vice
Size : 4", 6" & 8"

ART-196



Two Piece Modular Precision Machine Vice
Size : 6"

ART-197



Heavy Duty Precision Machine Vice
Size : 6"

ART-198



Precision Dual Station Vice
Size : 6"

ART-199



Precision Quick Setting Machine Vice
Size : 150 mm

ART-200



Precision Compact Tilt Lock Down Machine Vice
Size : 6"

ART-201



Tilt Lock Down Self Centering Vice
Size : 6"

ART-202



Tilt Lock Down Machine Vice
Size : 4", 5", 6", 8"

ART-203



Milling Vice
Two Piece Adjust Ment
Size : 6" & 8"

ART-204



Milling Machine Vice
Size : 4", 5", 6", 8", 10", 12"

ART-205



Precision Machine Vice
Size : 4", 6"

ART-206



Precision Milling Vice (J & S Type)
Size : 4", 6", 8"

ART-207



Super Milling Machine Vice
Size : 4", 5", 6", 8"

ART-208



Shaper Vise

Size : 6", 8", 10", 12", 16"

ART-209



Tilting and Swiveling Vise

Size : 4", 5", 6", 8"

ART-210



Universal Machine Vise

Size : 2", 3", 4", 6"

ART-211



3 Way Universal Tilt and Swivel Vise

Size : 2", 3", 4", 6"

ART-212



**Mechanics Bench Vise
Twin Guide**

Size : 00", 0", 1", 2", 3", 4", 5", 6", 8", 10", 12"

ART-213



**Tool Maker's Vice with
Bronze Nut,**

Size : 3", 3.1/2", 4", 5", 6", 8"

ART-214



**Super Heavy Duty Bench
Vise**

Size : 1", 2", 3", 4", 5", 6", 8"

ART-215



Quick Action Vise

Size : 4", 4x1/2", 5", 6"

ART-216



All Steel Bench Vise

Size : 3", 4", 5", 6", 8"

ART-217



Engineer's Bench Vise

Size : 3", 4", 5", 6", 8", 12"

ART-218



Machinist's Bench Vise

Size : 4", 5", 6"

ART-219



Bench Vise (German Type)

Size : 4", 5", 6"

ART-220



**Anvil Cast Iron and Anvil
Cast Iron with Steel Plate**

Size : 10", 15", 25", 30", 35", 50", 75", 100", 150"

ART-221



Pipe Vice- Open Type

Size : 1 1/4", 2", 3", 4", 6", 8", 10"

ART-222



**Pipe Vice Open Type
(Ductile Body)**

Size : 2", 3", 4"

ART-223



Self Locking Vice

Size : 1 1/2", 2", 2 1/2", 3 1/2", 4 1/2", 6"

ART-224



Pipe Vice Pillar Type

Size : 1 1/2", 2", 3", 4", 6"

ART-225



Pipe Vice Round Pillar

Size : 1 1/2", 2", 3", 4"

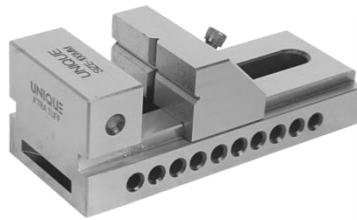
ART-226



Chain Pipe Vice

Size : 2", 3", 4", 6", 8"

ART-227



Precision Screwless Vice

Size : 2", 3", 4", 5", 6"

ART-228



Precision Grinding Vice

Size : 2-1/2", 3", 4", 5", 6"

ART-229



Precision Sine Vice Pin Type

Size : 3"

ART-230



Precision Sine Vice Pin Type

Size : 3"

ART-231



Precision Drill Vice

Size : 2.1/2", 3", 4", 5", 6"

ART-232



Drill Machine Vice (Commercial)

Size : 3", 4", 5", 6"

ART-233



Drill Machine Vice

Size : 3", 4", 6"

ART-234



Drill Vice Heavy Duty

Size : 3", 4", 5", 6", 8", 12"

ART-235



Drill Press Vice

Size : 3", 4", 6"

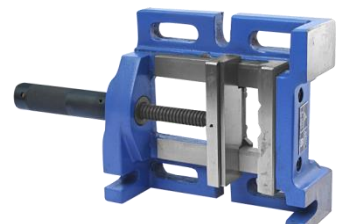
ART-236



Precision Unigrip Vice

Size : 3", 4", 5"

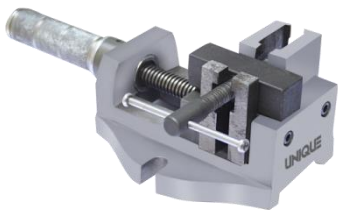
ART-237



3 Way Precision Drill Vice

Size : 3", 4"

ART-238



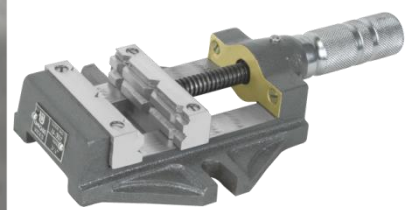
Armature Bearing Puller Vice – Heavy Duty
Size : 4"

ART-239



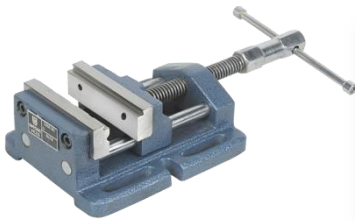
Super Drill Machine Vice
Size : 4", 6", 8"

ART-240



Unigrip Machine Vice
Size : 3-1/4", 4", 6"

ART-241



Drill Vice (German Type)
Size : 3", 4", 5"

ART-242



Drill Press Vice Precision
Size : 3", 4", 5"

ART-243



Precision Tilting & Swivelling Vice J & S Type(England)
Size : 4", 6"

ART-244



Self Centering Shaft Vice
Size : 80MM , 150MM

ART-244



Self Centring Vice
Size : 2", 3", 4", 6"

ART-245



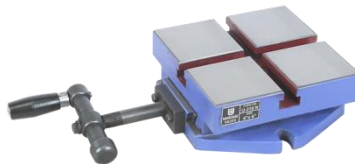
Precision Self Centring Vice
Size : 4", 6"

ART-246



Vertical Sliding Table
Size : 7X10"

ART-247



Single Sliding Table
Size : 6", 8"

ART-248



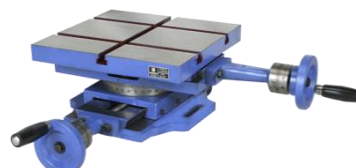
Compound Sliding Table with Calibrated Wheel & Swivelling Table
Size : 12x6", 12x8"

ART-249



Compound Sliding Table with Calibrated Wheel & Swivelling Table
Size : 12x12, 12x20, 16x16

ART-250



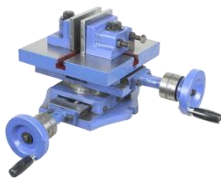
Compound Sliding Table with Calibrated Wheel & Swivelling Table
Size : 12x12, 12x20, 16x16

ART-251



Compound Sliding Table with Calibrated Wheel & Swivelling Table
Size : 12x12, 12x20, 16x16

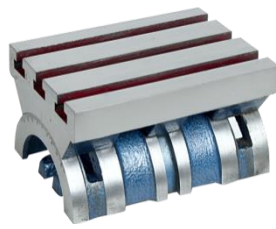
ART-252



Compound Sliding Table with Calibrated Wheel & Swivelling Table

Size :8x8"

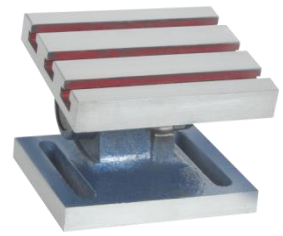
ART-253



Tilting Vice Table.

Size : 5x7", 7x10" , 10x15"

ART-254



Swivel Angle Table

Size : 5x6", 6x8", 8x10", 10x12", 10x15"

ART-255



Universal Tilting Table

Size : 4x5", 6x8", 8x10"

ART-256



Indexing Milling Fixture Horizontal & Vertical (With Chuck & Tail Stock)

Size : 200mm, 225mm

ART-257



Rotary Milling Table

Size : 6",8",10",12",14",18"

ART-258



Rotary Milling Table

Size : 6",8",10",12",14",18",20",24"

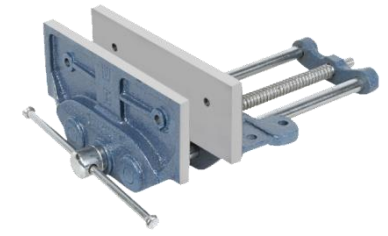
ART-259



Dividing Head

Size : 4.1/2, 5.1/2, 6.1/2, 7-1/2

ART-260



Wood Workers Vice (Record Type)

Size : 6",7",8",9",10",12"

ART-261



Baby Vice

Size : 1.1/4,1.5/8,2", 2.3/8, 3"

ART-262



Baby Vice- Heavy Duty

Size : 1, 1 1/2 , 2, 2 1/2 ,3

ART-263

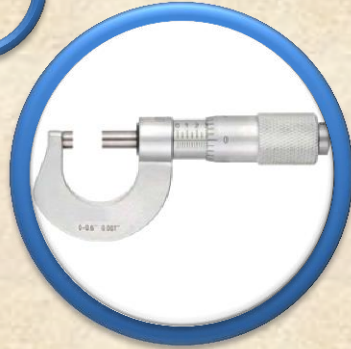


Clamping Kit

Size : 14-12,16-12,18-12, 18-16mm

ART-264

Measuring Tools



←INSIZE→

BAKER

...a passion for precision

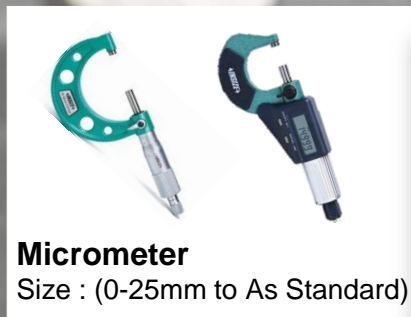
Mitutoyo



Vernier Caliper

Size : 150 to 1000mm

ART-265



Micrometer

Size : (0-25mm to As Standard)

ART-266



Height Gauge

Size : (150mm to As Standard)

ART-267



Dial Indicator

Size : As Standard

ART-268



Bore Gauge

Size : As Standard

ART-269



Depth Gauge

Size :90 to 460mm

ART-270



Feeler Gauge

Size : As Standard

ART-271



Radius Gauge

Size : As Standard

ART-272



Dial Test Indicator

Size : As Standard

ART-273



Magnetic Stand

Size : As Standard

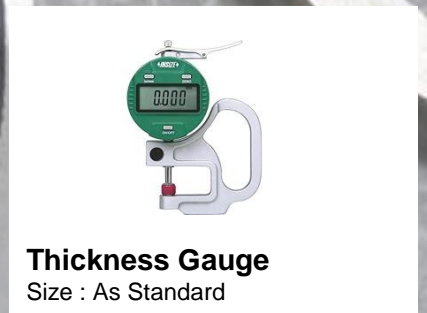
ART-274



Caliper Gauge

Size : As Standard

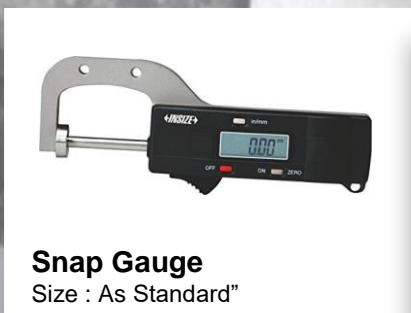
ART-275



Thickness Gauge

Size : As Standard

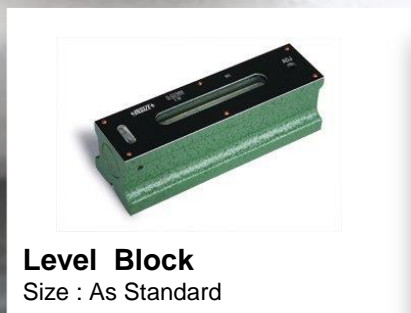
ART-276



Snap Gauge

Size : As Standard"

ART-277



Level Block

Size : As Standard

ART-278



Thread Plug Gauge

Size : As Standard

ART-279



Try Squares
Size : 150 to 1000mm

ART-280



Spring Caliper
Size : (0-150mm to 0 -300mm)

ART-281



Hardness Tester
Size : (As Standard)

ART-282



Torque Wrench
Size : As Standard

ART-283



Steel Gauge Block
Size : As Standard

ART-284



Multimeter
Size :As Standard

ART-284



Protractor
Size : As Standard

ART-285



Coating Thickness Gauge
Size : As Standard

ART-286



Digital Radius Gage
Size : As Standard

ART-287



Anvil For Bore Gauges
Size : As Standard

ART-288



Setting Rings
Size : As Standard

ART-289



Micrometer Stand
Size :As Standard

ART-290



Micrometer Head
Size : As Standard

ART-291



Internal Micrometer
Size : As Standard

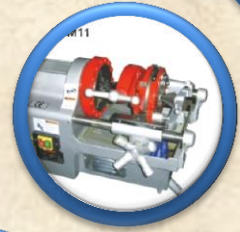
ART-292



Tubular Inside Micrometer
Size : As Standard

ART-293

Machine Tools & Accessories





Toggle Clamp

Size : As Standard

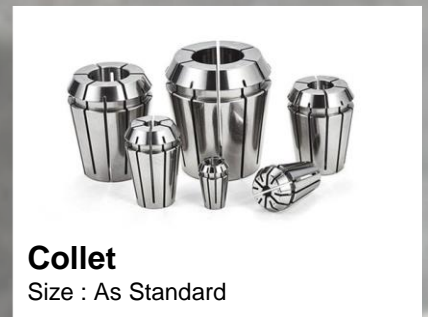
ART-294



Tool Post Grinder

Size : As Standard

ART-295



Collet

Size : As Standard

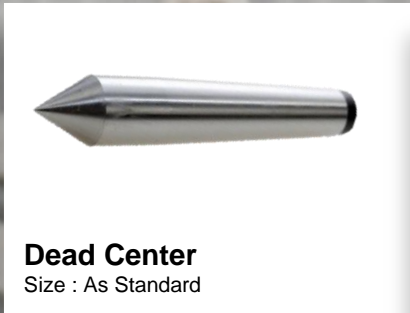
ART-296



Revolving Center

Size : As Standard

ART-297



Dead Center

Size : As Standard

ART-298



Pipe Center

Size :As Standard

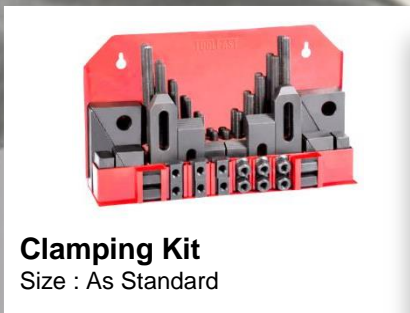
ART-299



Universal Strap Clamp

Size : As Standard

ART-300



Clamping Kit

Size : As Standard

ART-301



Drill Bits

Size : As Standard

ART-302





V-MACH INTERNATIONAL

Address: 4/22, Kamruddin Nagar, Near Deepanshu Public School, Nangloi,
Delhi 110041,INDIA

Mobile No-: +91 8076769893, +91 8750658328

E-mail-: info@vmachinternational.com, vmachinternational@gmail.com