

Description

Made from best quality spring steel EN-47 & approximately hardened.

While ordering Split Sleeve for Taps specify shank & square size. Alternatively mention whether the Tap is 'SHORT HAND TAP' or 'LONG MACHINE TAP'

TAP SPECIFICATIONS

TAP DIA. x SQUARE mm	SHORT HAND TAP SIZE	Ød mm	W mm	AVAILABLE IN MT SIZES	OTHER EQUIVALENT TAPS
Ø 3.15 X □ 02.50	M3	3.15	2.6	MT - 1	M4 Long M/C Tap, 1/8" BSW, BSF Short Hand Tap
Ø 4.00 X □ 03.15	M4	4.00	3.3	MT - 1	M5 Long M/C Tap, 5/32" BSW, BSF Short Hand Tap
Ø 4.50 X □ 03.55	M6 Long M/C Tap	4.50	3.7	MT - 1, 2	3/16" BSW, BSF Short Hand Tap
Ø 5.00 X □ 04.00	M5	5.00	4.2	MT - 1	3/16" BSW, BSF Short Hand Tap
Ø 6.30 X □ 05.00	M6	6.30	5.2	MT - 1, 2	M8 Long M/C Tap, 1/4" BSW, BSF Short Hand Tap
Ø 8.00 X □ 06.30	M8	8.00	6.5	MT - 1, 2	M10 Long M/C Tap, 5/16" BSW, BSF Short Hand Tap
Ø 10.00 X □ 08.00	M8	10.00	8.3	MT - 2	3/8" BSW, BSF Short Hand Tap

TAP DIA. x SQUARE mm	SHORT HAND TAP SIZE	Ød mm	W mm	AVAILABLE IN MT SIZES	OTHER EQUIVALENT TAPS
Ø 9.00 X □ 07.10	M12	9.00	7.4	MT - 2, 3	1/2" BSW, BSF Short Hand Tap
Ø 11.20 X □ 09.00	M14	11.20	9.3	MT - 2, 3	9/16" BSW, BSF Short Hand Tap
Ø 12.50 X □ 10.00	M16	12.50	10.3	MT - 2, 3, 4	5/8" BSW, BSF Short Hand Tap
Ø 14.00 X □ 11.20	M18/20	14.00	11.5	MT - 3, 4	11/16", 3/4" BSW, BSF Short Hand Tap
Ø 16.00 X □ 12.50	M22	16.00	12.8	MT - 3, 4	7/8" BSW, BSF Short Hand Tap
Ø 18.00 X □ 12.50	M24	18.00	14.4	MT - 3, 4, 5	1" BSW, BSF Short Hand Tap
Ø 20.00 X □ 16.00	M27/30	20.00	16.4	MT - 5	1 1/8" BSW, BSF Short Hand Tap
Ø 25.00 X □ 20.00	M36	25.00	20.4	MT - 5	1 3/8" BSW, BSF Short Hand Tap
Ø 28.00 X □ 22.40	M42	28.00	22.8	MT - 5	1 1/2" BSW, BSF Short Hand Tap

MORSE TAPER SPECIFICATIONS

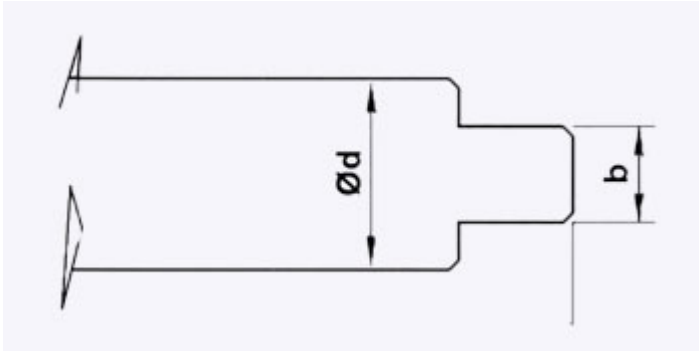
M.T. No.	ØD mm	L mm	L1 mm	SHORT HAND TAP HOLDING RANGE
1	12.065	65.5	3.5	M3 to M8
2	17.780	80.0	5.0	M6 to M16
3	23.825	99.0	5.0	M12 to M24
4	31.267	124.0	6.5	M16 to M24
5	44.399	156.0	6.5	M24 to M42

SPLIT SLEEVES FOR DRILL & CENTER DRILLS

Split Sleeve for Drills are made only for specific Drill sizes as indicated in below table:

M.T. No.	Available for Drill Sizes & Center Drill Sizes
MT - 1	4, 4.2, 4.5, 3/16", 5, 5.1, 5.3, 5.5, 7/32", 5.8, 6, 6.3, 1/4", 6.5, 6.7, 17/64", 6.8, 7, 9/32", 7.5, 5/16", 7.8, 5/16", 8, 21/64", 8.5, BS-1, BS-2, BS-3
MT - 2	5, 5.1, 5.3, 5.5, 7/32", 5.8, 6, 6.3, 1/4", 6.5, 6.7, 17/64", 6.8, 7, 9/32", 7.5, 7.8, 5/16", 8, 21/64", 8.5, 11/32", 9, 23/64", 9.5, 3/8", 10, 13/32", 10.5, 27/64", 11, 7/16", 11.5, 12, 31/64", 12.5, 1/2", 13, 13.5, 14, BS-2, BS-3, BS-4
MT - 3	BS-4, BS-5, BS-6

A Driving Tenon must be produced on the back end of the Drill as specified below to give a positive drive to the drill.



$\varnothing D$ mm	b mm h12	L mm
3.0 to 3.5	1.6	2.2
3.5 to 4.0	2.0	2.2
4.0 to 4.5	2.2	2.5
4.5 to 5.5	2.5	2.5
5.5 to 6.5	3.0	3.0

$\varnothing D$ mm	b mm h12	L mm
6.5 to 8.0	3.5	3.5
8.0 to 9.5	4.5	4.5
9.5 to 11.0	5.0	5.0
11.0 to 13.0	6.0	6.0
13.0 to 15.0	7.0	7.0

FOR TAPS:

ORDER BY : MT No. X TAP DIA. X SQUARE SIZE Eg.: Split Sleeve for Taps MT-2 Dia 8 x Square 6.3 mm
If Split Sleeve are Ordered by Tap thread size we would supply them suitable for Short Hand Tap.

FOR DRILLS:

ORDER BY : MT No. x DRILL DIA. Eg.: Split Sleeve for Drill MT-2 Dia 8 mm.